

## Erection of a mechanical delivery base in Dinslaken

**Client:** Baugesellschaft Walter Hellmich GmbH



**Customer:** Walter Hellmich GmbH

In 2012 a mechanical delivery base (MechZB48) was built in Dinslaken for the Deutsche Post DHL to deliver packages in the Dinslaken / Oberhausen area. Therefor an unsupported warehouse of 43.00m clear space distance and 89.00m in length was erected. This type of building was specifically designed for an automated sorting plant which is capable of sorting up to 3,000 packages per hour and distributing them on the slides for the different postal zones. Next to the base building the office and social building was built for about 70 employees. The plot area is about 16,300m<sup>2</sup>, the gross floor area 4,200m<sup>2</sup> and the gross volume 37,200m<sup>3</sup>. The production costs add up to approximately 10 m Euros.

### Our performances:

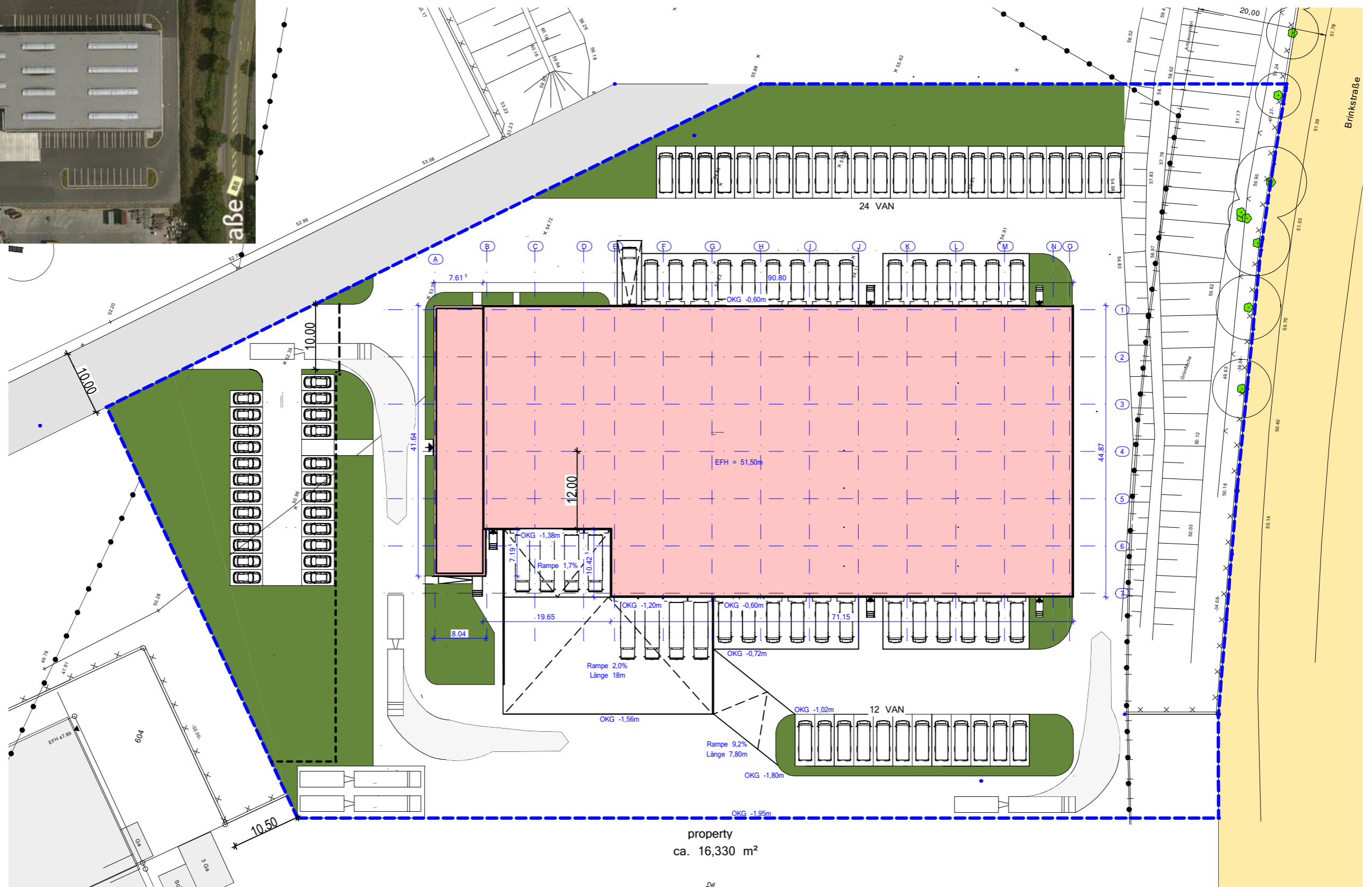
- **Design planning of the building and outdoor facilities**
- **Building application process**
- **Static design**
- **Detailed and approved final design**
- **Co-ordination of the professionals for:**
  - Geotechnics**
  - Fire protection**
  - Buildig services**
  - Outdoor facilities**
- **Co-ordination of the precast concrete unit concept**
- **Static calculations of the sleeve foundation**
- **Formwork and reinforcement drawings**



*DHL MechZB Dinslaken*

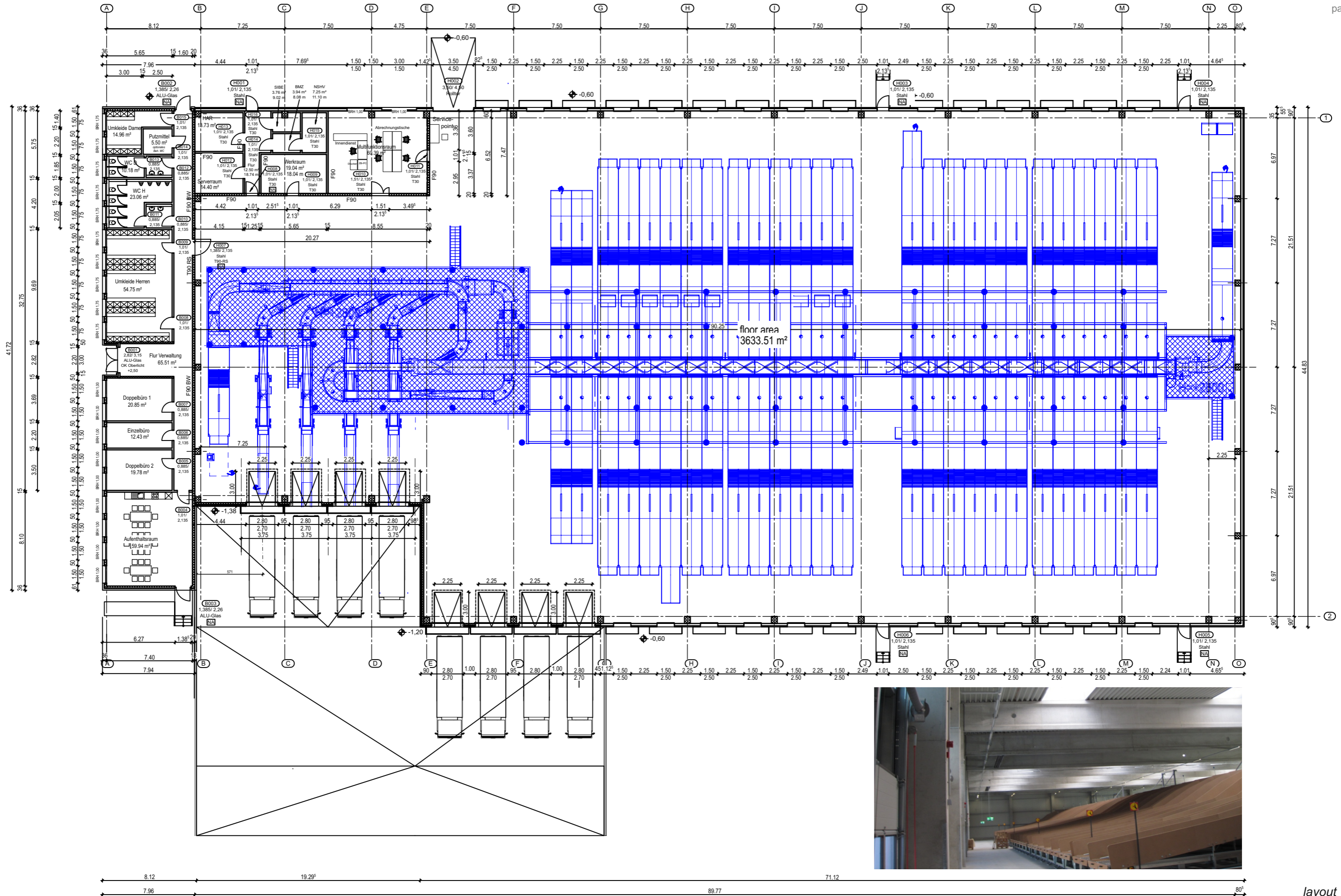


aerial photo



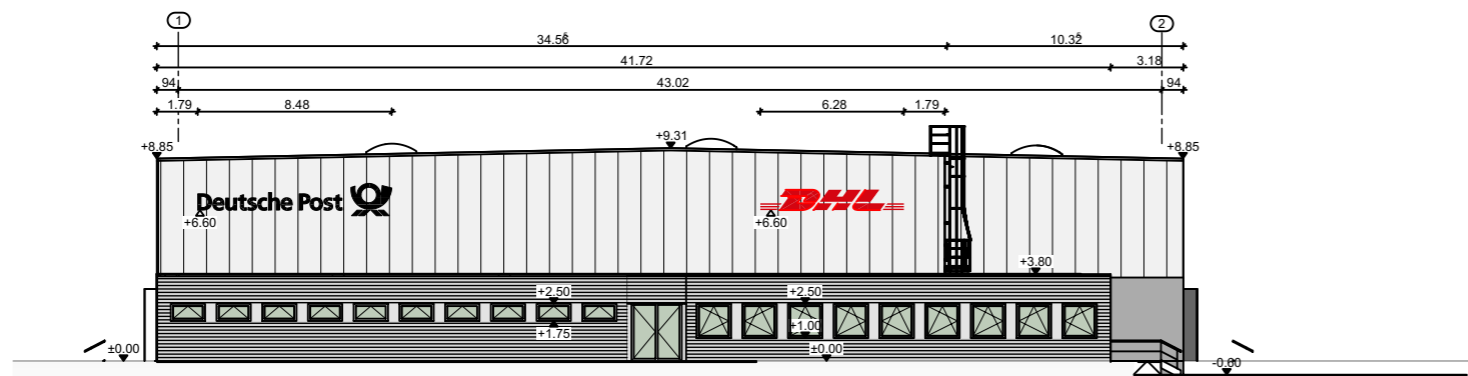
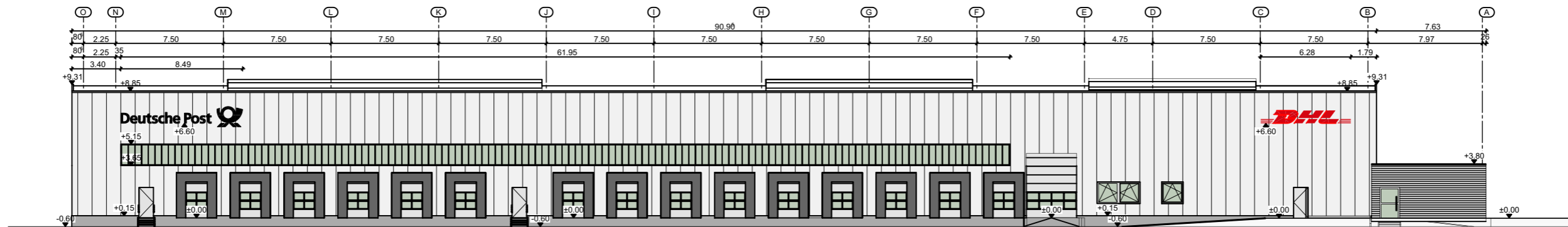
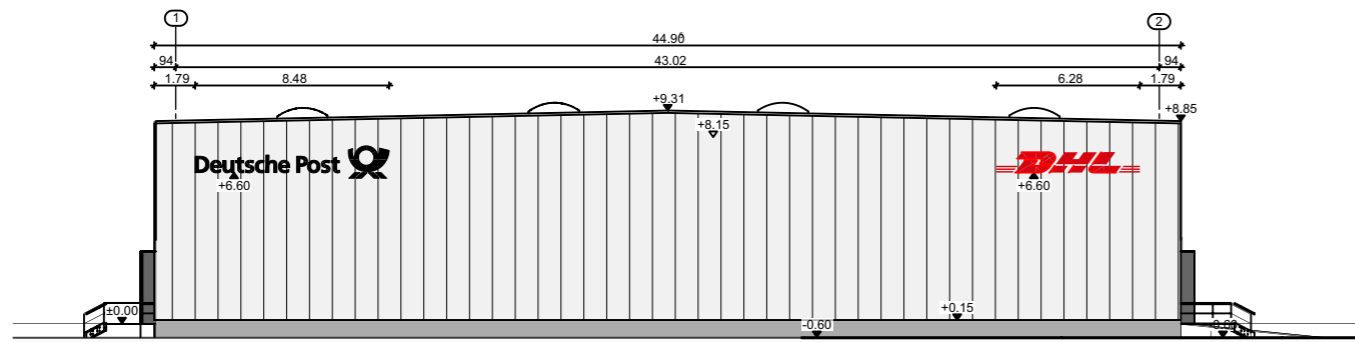
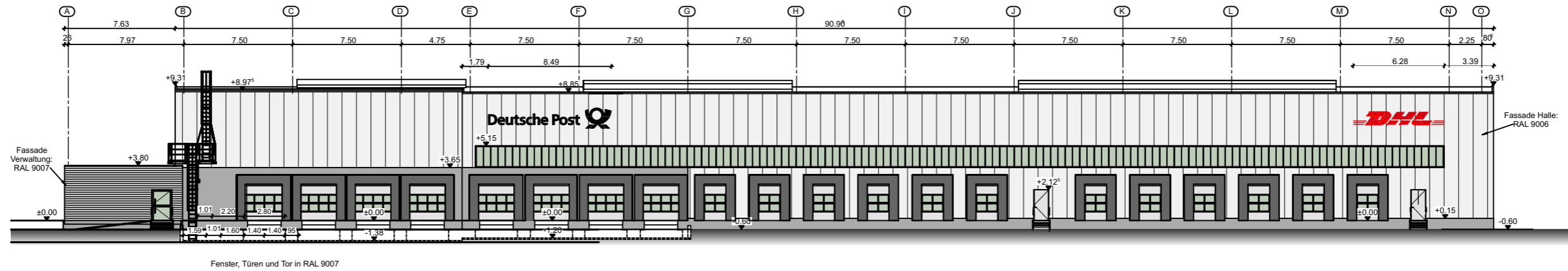
property  
ca. 16,330 m<sup>2</sup>

layout



layout





elevations