

Erection of a mechanical delivery base in Wuerselen

Deutsche Post 

Client: Baugesellschaft Walter Hellmich GmbH



Customer: Walter Hellmich GmbH

In 2013 a mechanical delivery base (MechZB60) was built at the highway intersection Wuerselen (A4 / A44) for the Deutsche Post DHL to deliver packages in the Aachen area. Therefor an unsupported warehouse of 43.00m clear space distance and 104.00m in length was erected. This type of building was specifically designed for an automated sorting plant which is capable of sorting up to 3000 packages per hour and distributing them on the slides for the different postal zones. Next to the base building the office and social building was built for about 70 employees. The plot area is about 23,200m², the gross floor area 4,900m² and the gross volume 43,400m³. The production costs add up to 10 m Euros.

Our performances:

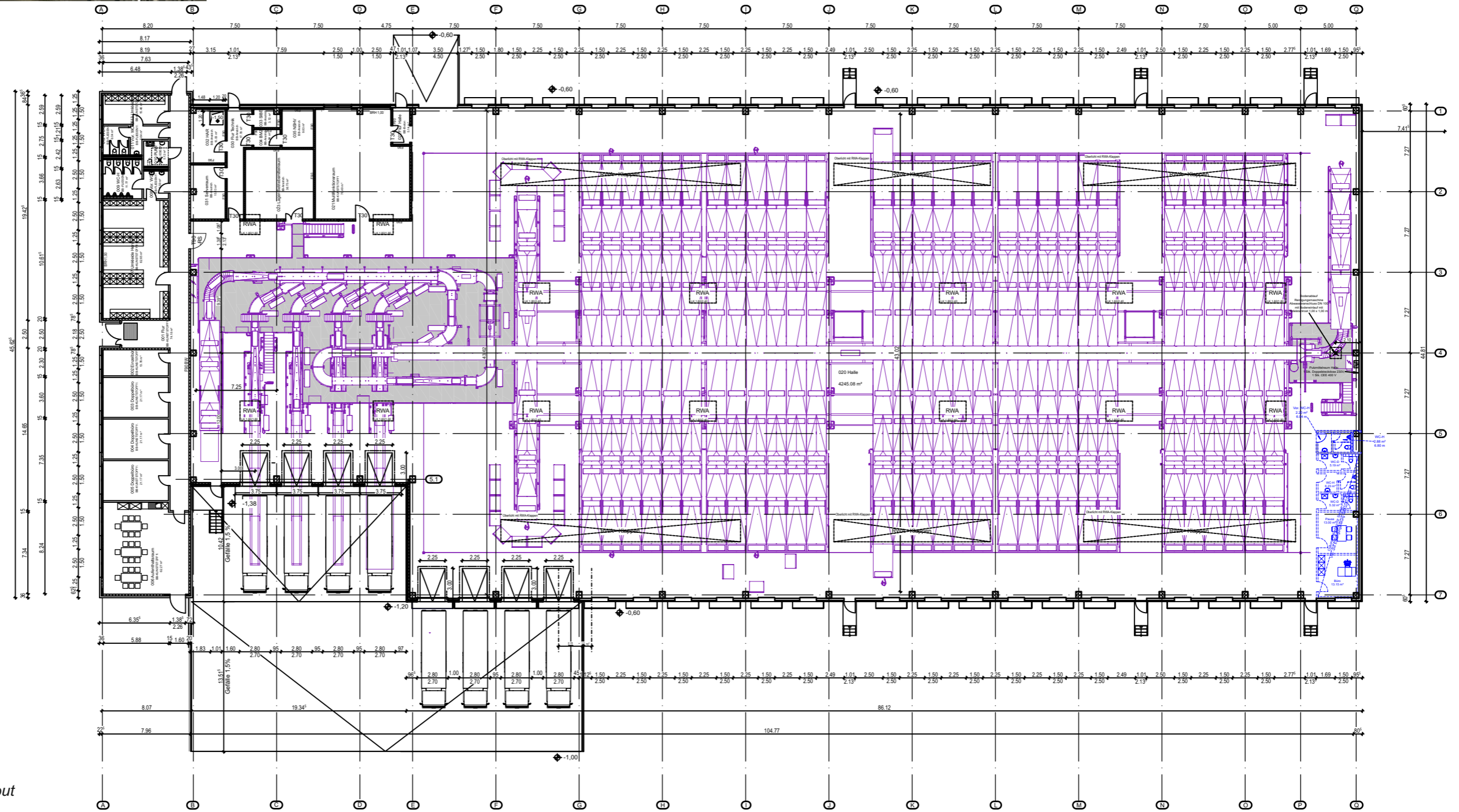
- **Design planning of the building and outdoor facilities**
- **Building application process**
- **Static design**
- **Detailed and approved final design**
- **Co-ordination of the professionals for:**
 - Geotechnics**
 - Fire protection**
 - Building services**
 - Outdoor facilities**
- **Co-ordination of the precast concrete unit concept**
- **Static calculations of the sleeve foundation**
- **Formwork and reinforcement drawings**



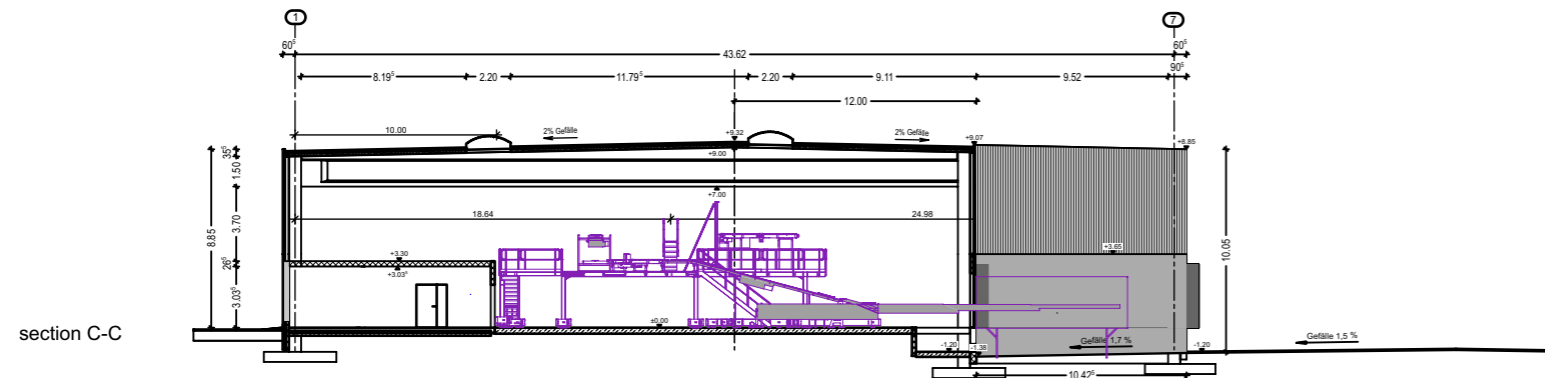
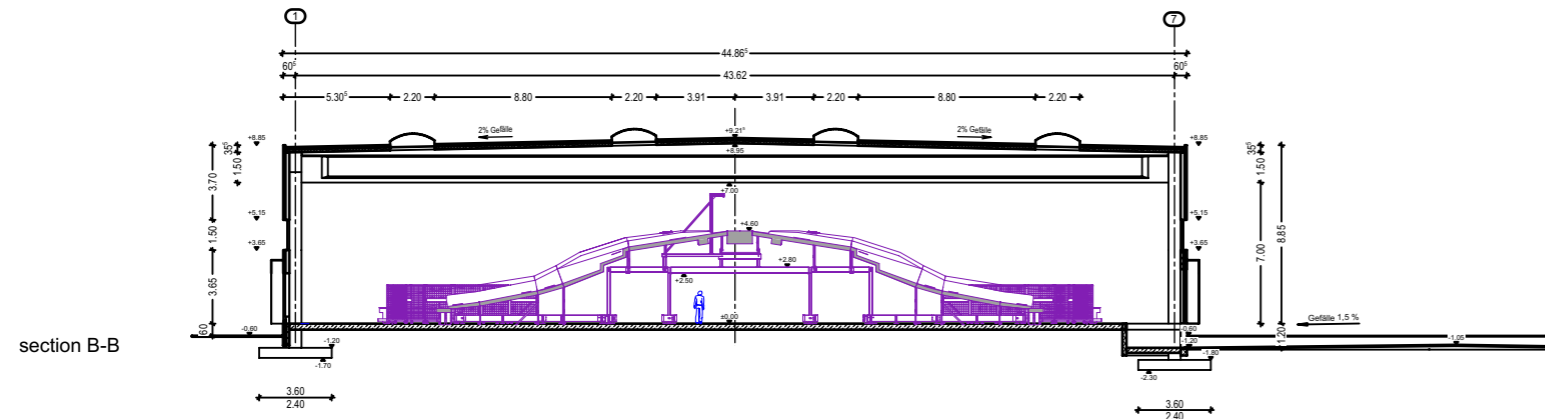
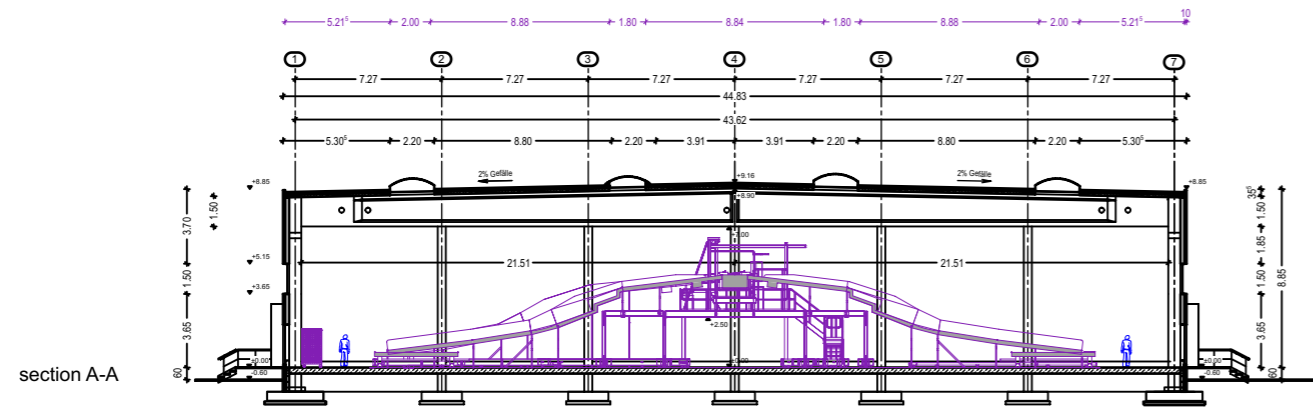
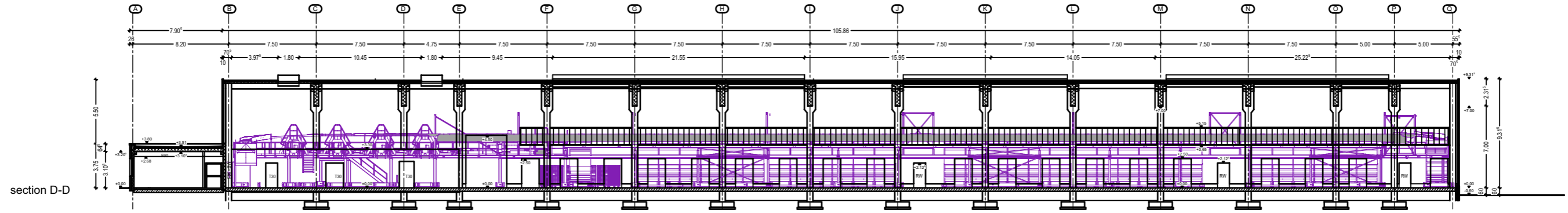
DHL MechZB Wuerselen



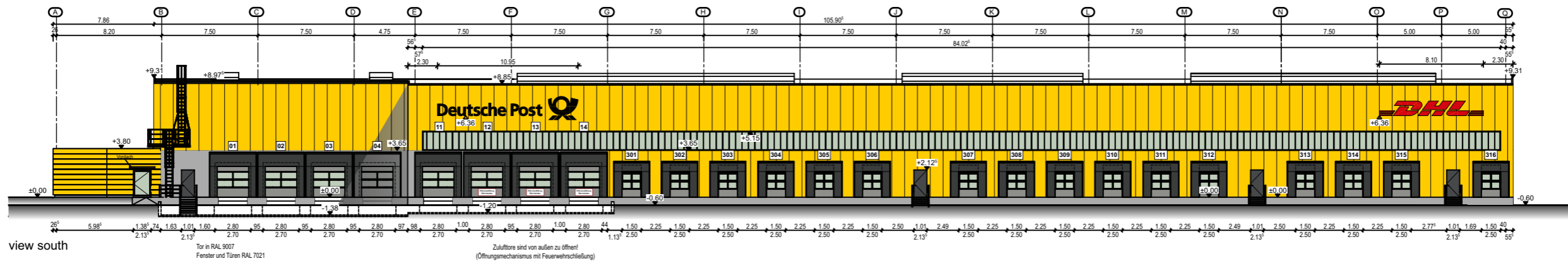
aerial photo



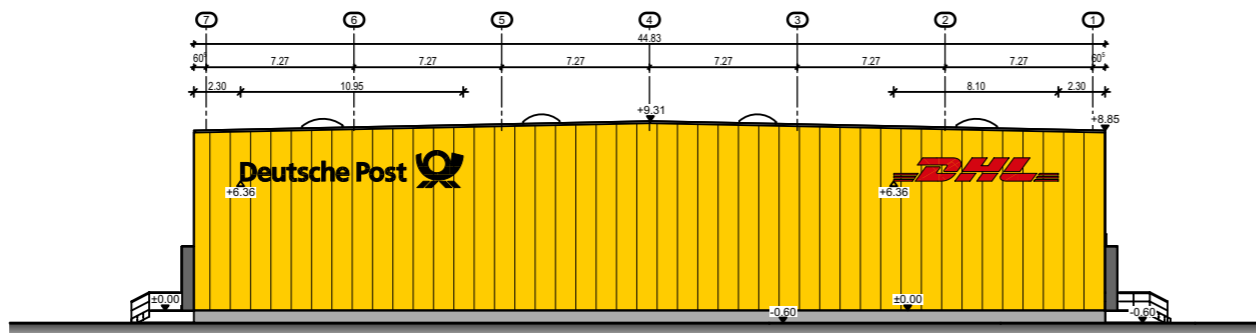
layout



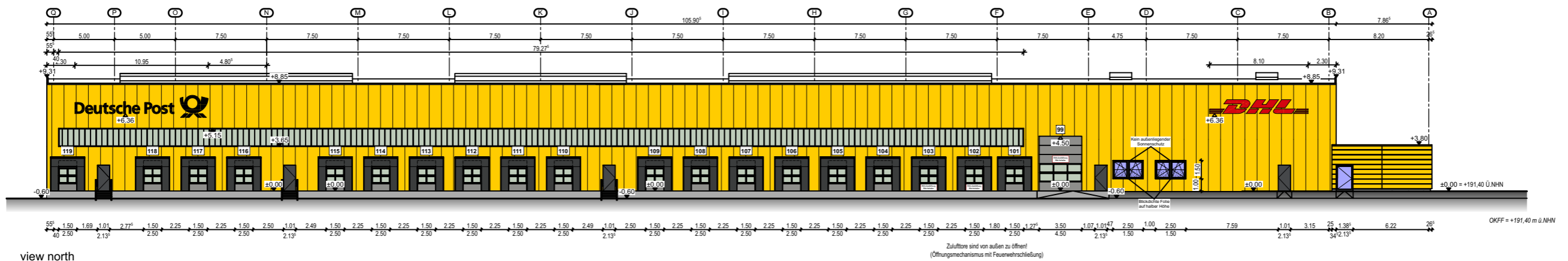
elevations



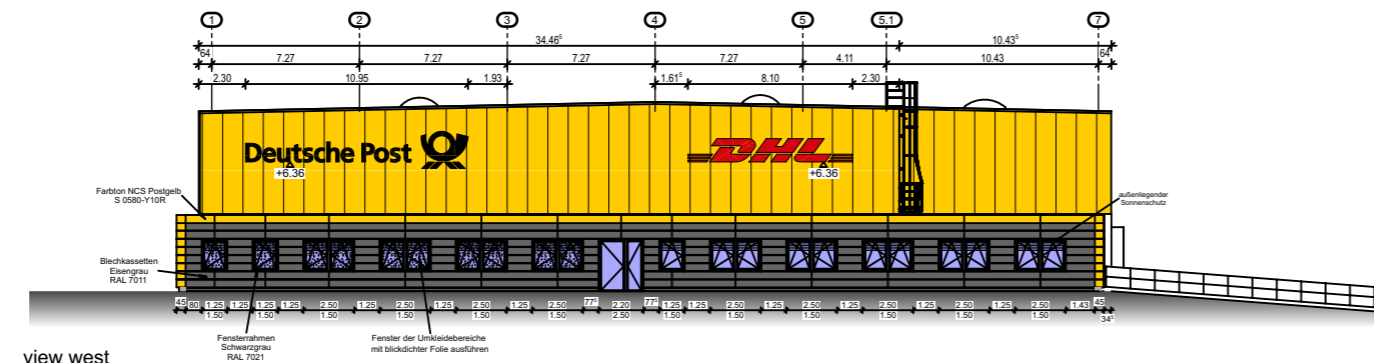
view south



view east



view north



view west